

MARSHALL ST NE.



THE COURTYARD

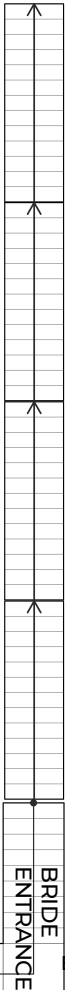


BAR/COUNTER

CORPORATE/CONFERENCE LAYOUT - TASTING ROOM ONLY
• SEATING CAPACITY: 40
• MAX CAPACITY: 55 (STANDING)

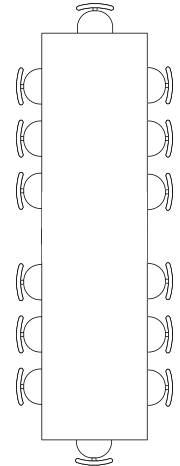
THE COMMONS

THE TASTING ROOM



BRIDE ENTRANCE

EVENTS ENTRANCE



HT

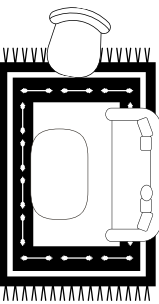
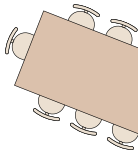
HT

HT

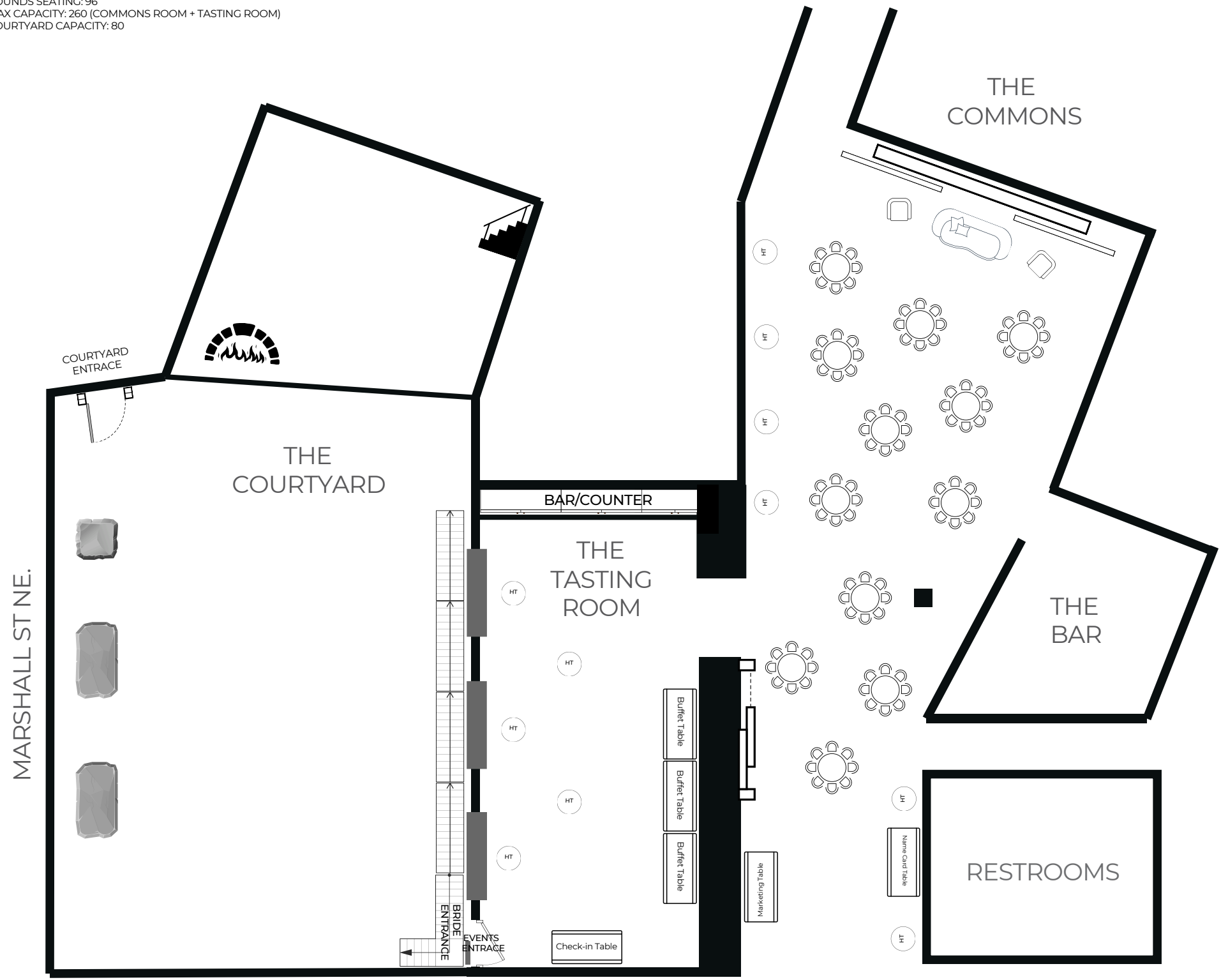
HT

HT

Check-in Table



- CORPORATE/CONFERENCE LAYOUT 1
- ROUNDS SEATING: 96
 - MAX CAPACITY: 260 (COMMONS ROOM + TASTING ROOM)
 - COURTYARD CAPACITY: 80



- CORPORATE/CONFERENCE LAYOUT 1
- THEATRE SEATING: 80 (CAN ACCOMMODATE MORE IF NEEDED)
 - MAX CAPACITY: 260 (COMMONS ROOM + TASTING ROOM)
 - COURTYARD CAPACITY: 80

